

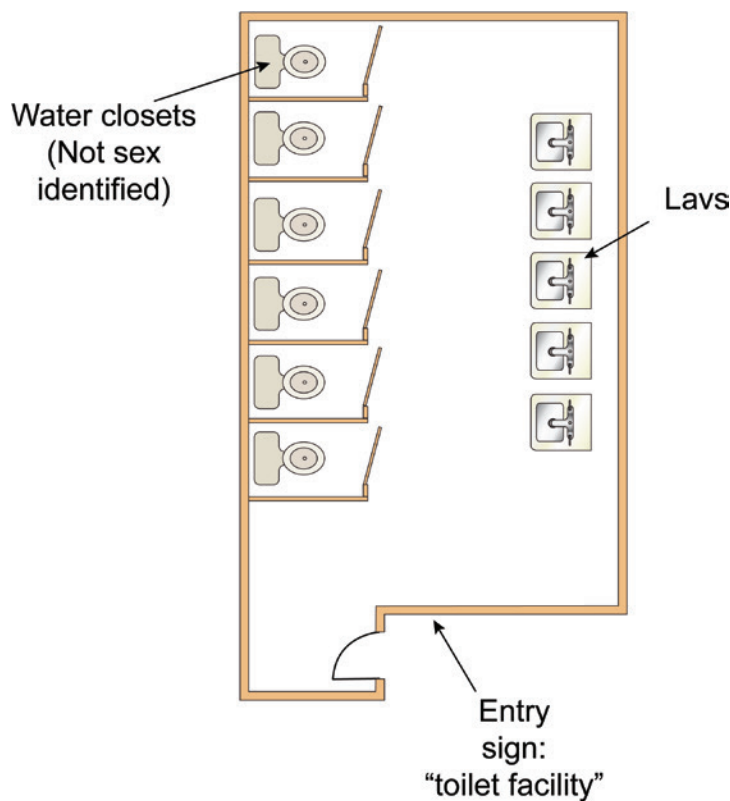
CHANGE TYPE: Modification

CHANGE SUMMARY: Designs for multiple-user facilities serving both sexes are possible.

2021 CODE: **403.2 Separate facilities.** Where plumbing fixtures are required, separate facilities shall be provided for each sex.

Exceptions:

1. through 4. remain unchanged.
5. Separate facilities shall not be required to be designated by sex where single-user toilets rooms are provided in accordance with Section 403.1.2.
6. Separate facilities shall not be required where rooms having both water closets and lavatory fixtures are designed for use by both sexes and privacy for water closets is provided in accordance with Section 405.3.4. Urinals shall be located in an area visually separated from the remainder of the facility or each urinal that is provided shall be located in a stall.



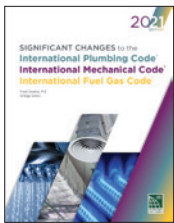
Multiple-user nonseparated toilet facilities

403.2

Multiple-user Nonseparated Toilet Facilities

CHANGE SIGNIFICANCE: Exception 5 provides an allowance for single-user toilet rooms to not be designated by sex. However, for 2021, Section 403.1.2 requires that single-user toilet facilities not be designated by sex, making this exception unnecessary.

Exception 6 introduces the new concept of multiple-user toilet facilities designed to serve both sexes. Similar to the new concept introduced in Section 403.1.1 (multiple-user toilet facilities to serve all genders), this exception allows multiple-user facilities to be labeled for use by both sexes (male/female). As Section 405.3.4 was not changed for the 2021 edition, multiple-user separate sex toilet facility designs that were compliant with the 2018 code edition could comply with this exception, provided that any urinals are in stalls.



This excerpt is taken from *Significant Changes to the International Plumbing/Mechanical/Fuel Gas Codes, 2021 Edition*.

The Significant Changes series takes you directly to the most important changes that impact projects. Key changes are identified then followed by in-depth discussion of how the change affects real-world application. Photos, tables and illustrations are included to further clarify application. Available for the IBC, IRC, IFC, IECC and IPC/IMC/IFGC, the Significant Changes publications are very useful training and review tools for transitioning to a new code edition.