

# Memorandum

**Date:** April 5, 2016

**From:** ICC/ANSI A117 Editorial Task Group

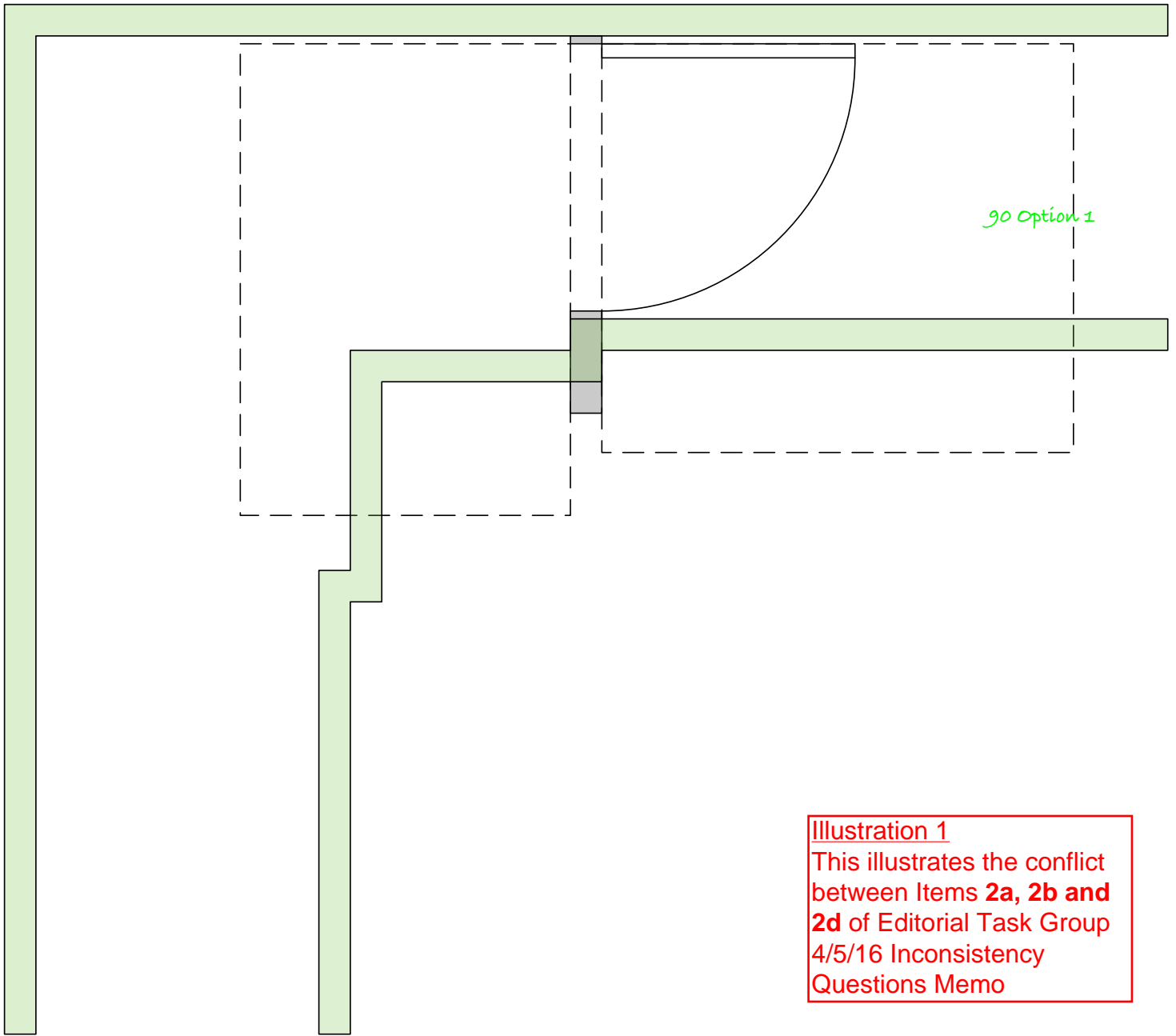
**To:** ICC/ANSI A117 Leadership and Wheeled Mobility Task Group

**Re:** Inconsistency Questions in 2015 A117.1 Draft

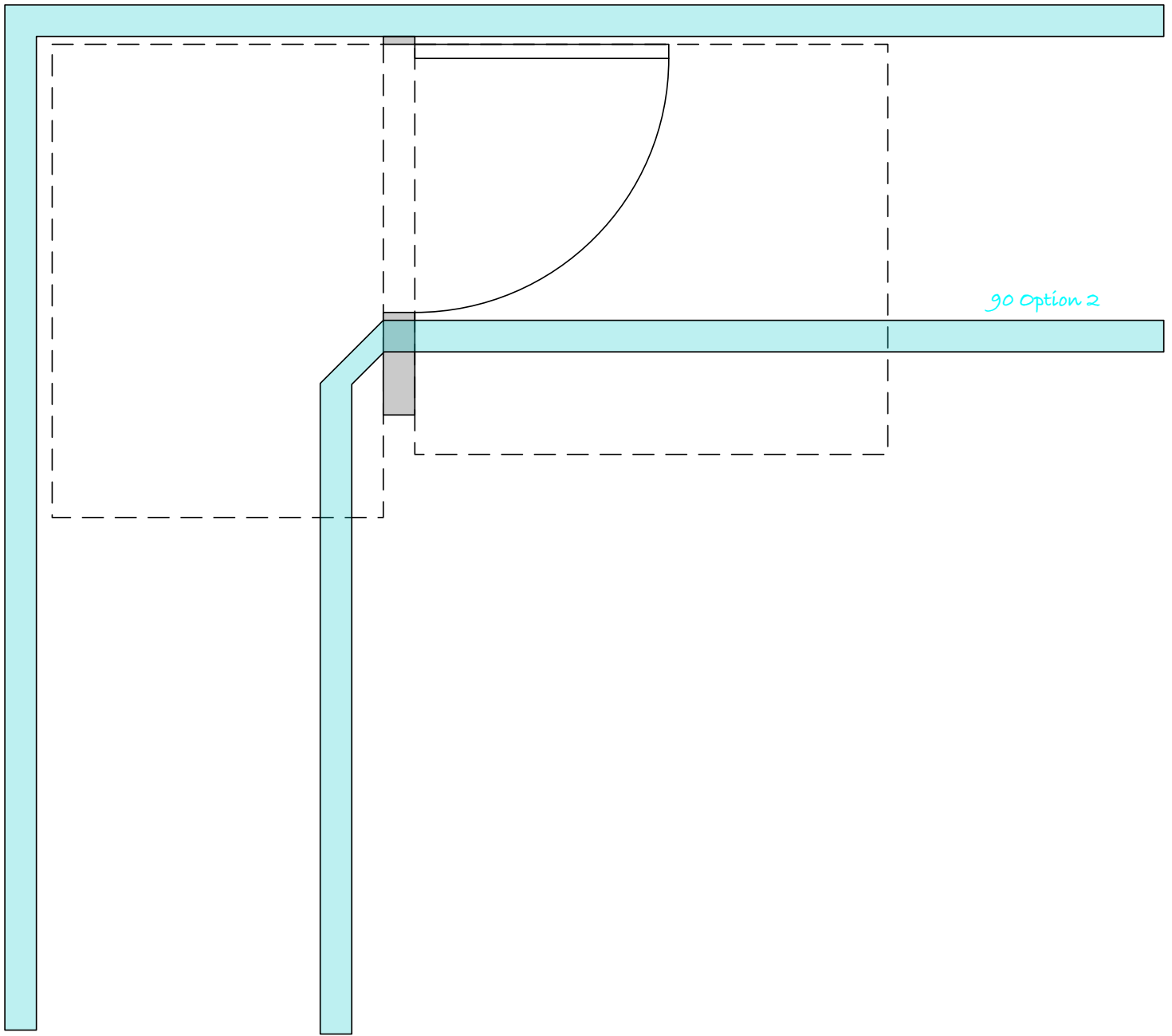
1. During the ICC/ANSI A117 Committee's Editorial Task Group's work to update illustrations in the Standard to match the text, we have discovered some serious inconsistencies among the new criteria for turns and turning spaces. These are building block issues that affect many other sections within the Standard and consequently, we are concerned that the inconsistencies may compromise the Standard's overall integrity.
2. The following provisions related to the new wheelchair **Clear Floor Space** requirements in Section 305.3.1 are inconsistent with one another:
  - a. Wheelchair Turns in Sections 403.5.2 and 403.5.3;
  - b. Door Maneuvering Clearances in Section 404.2.3.2;
  - c. Alcove provisions in Section 305.7; and
  - d. Clear Width Reduction allowed by Exception 2 to Section 403.5.1.

Example of the problem: The 32" narrowing is allowed at doorways along a 36" route. If there is a turn into a door or doorway, the 90 degree turn does not have an allowance for the reduction to 32" until you get past the turn and back to the 36" route. In turns where there is no limit on the depth of the turn (See Illustrations 1 and 2), how far back does the door have to be from the turn? Is it allowed on turns that have a cut back corner?

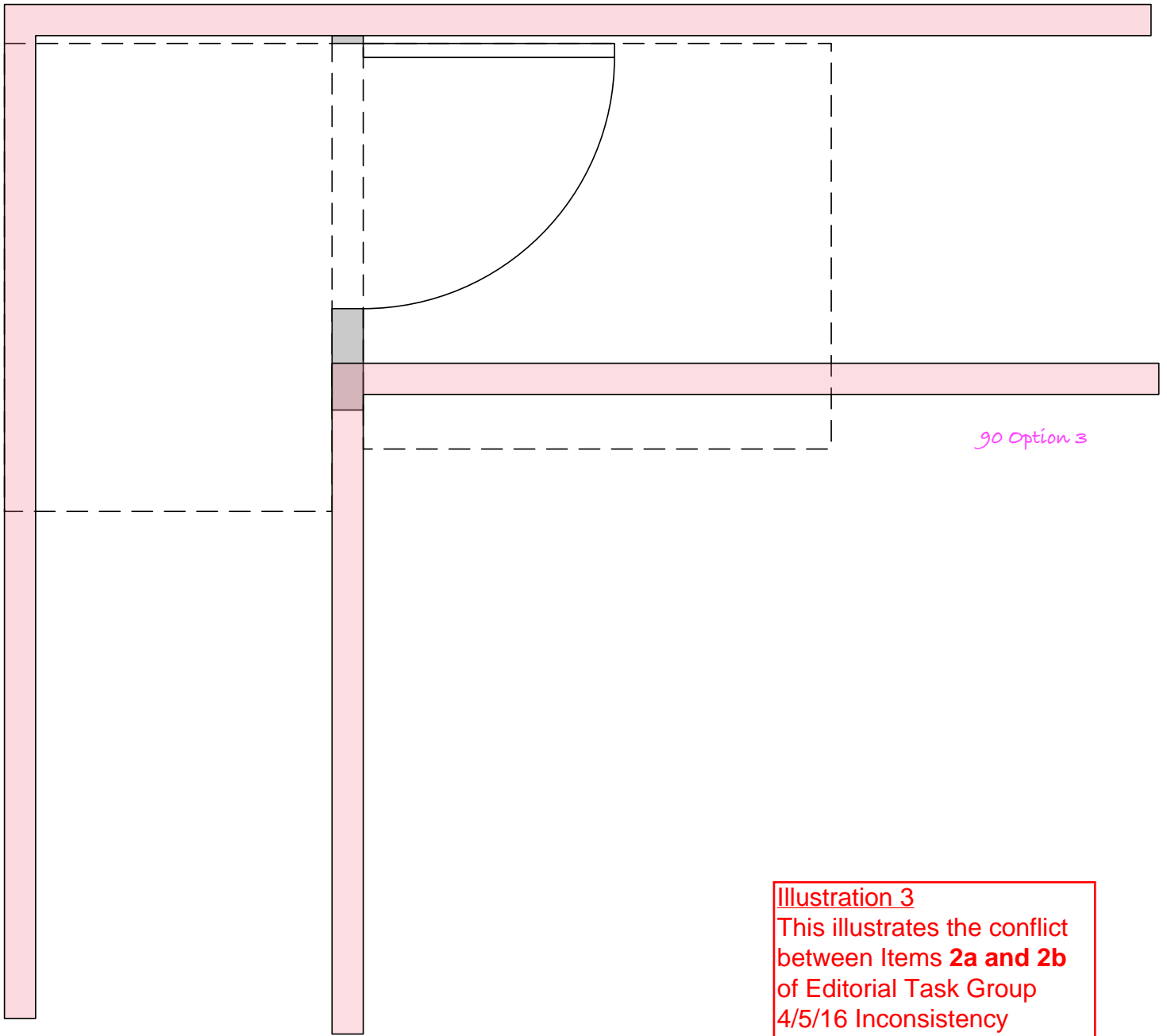
3. In addition, the allowance at Section 304.3.2.1 for knee and toe clearance at a turning space is inconsistent with the alcove provisions in Section 305.7. (See Illustrations 6-10) For instance, the text fails to establish whether the chamfered area belongs to an arm or base of the "T" or to both? The result is that we cannot determine how much, if any, of the chamfered area can be overhung by an object permitted to overhang one arm or the base.
4. We recognize that much of the work of the Wheeled Mobility Device Task Group was conducted with the understanding that the A117.1 does not include scoping and, therefore, the criteria would be applied to both new and existing construction. We believe this understanding led to compromises that might not have been made if the committee had known that the new criteria would ***not*** be applied to existing elements or facilities. **Since the assumptions regarding scoping are no longer valid, the full committee may want to reconsider their actions and to revise the criteria to have more consistent underlying rationale.** We believe that this is an issue the Wheeled Mobility Device Task Group should consider and report to the full Committee.



**Illustration 1**  
This illustrates the conflict  
between Items **2a, 2b and**  
**2d** of Editorial Task Group  
4/5/16 Inconsistency  
Questions Memo

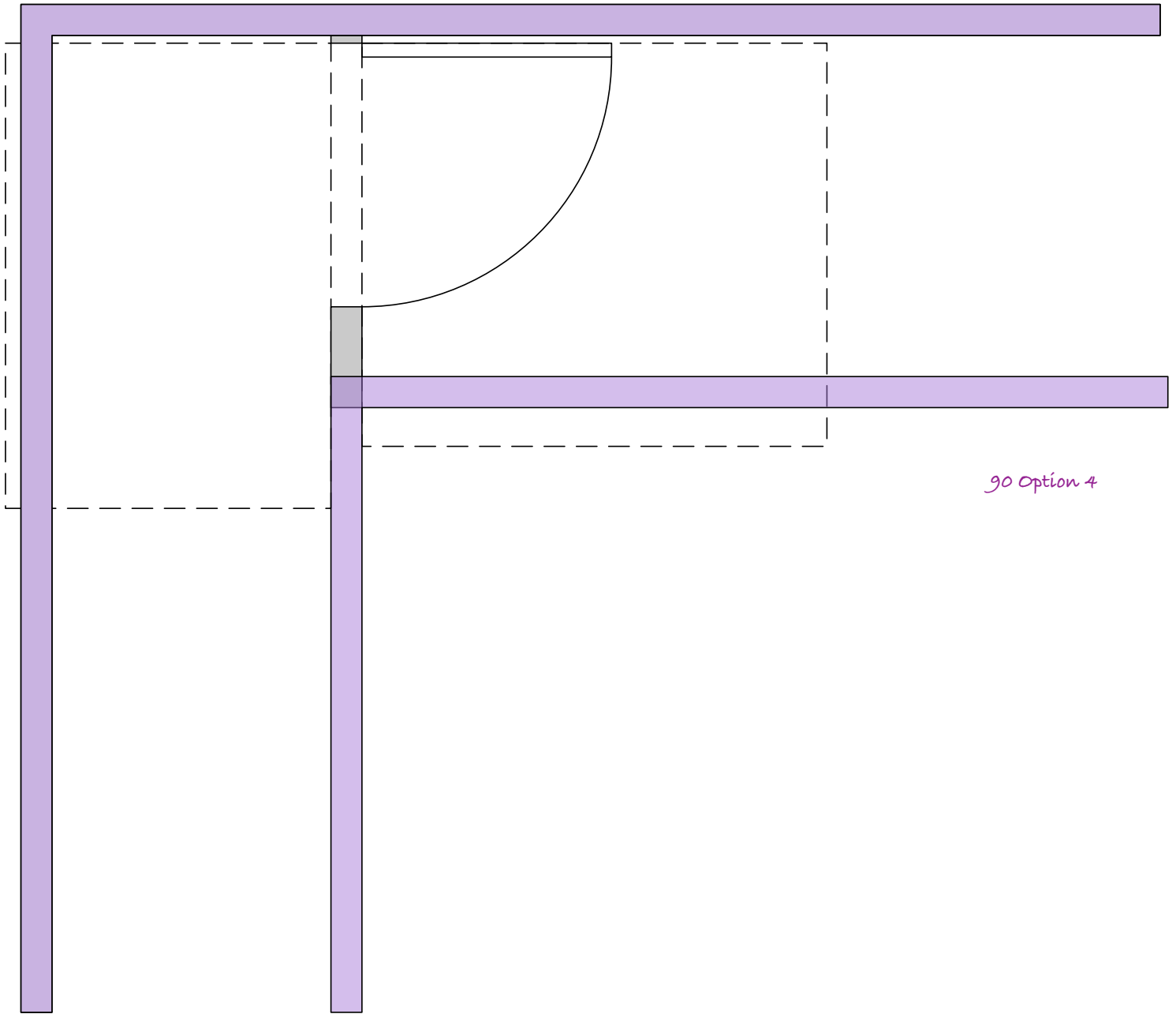


**Illustration 2**  
This illustrates the conflict  
between Items **2a, 2b and**  
**2d** of Editorial Task Group  
4/5/16 Inconsistency  
Questions Memo

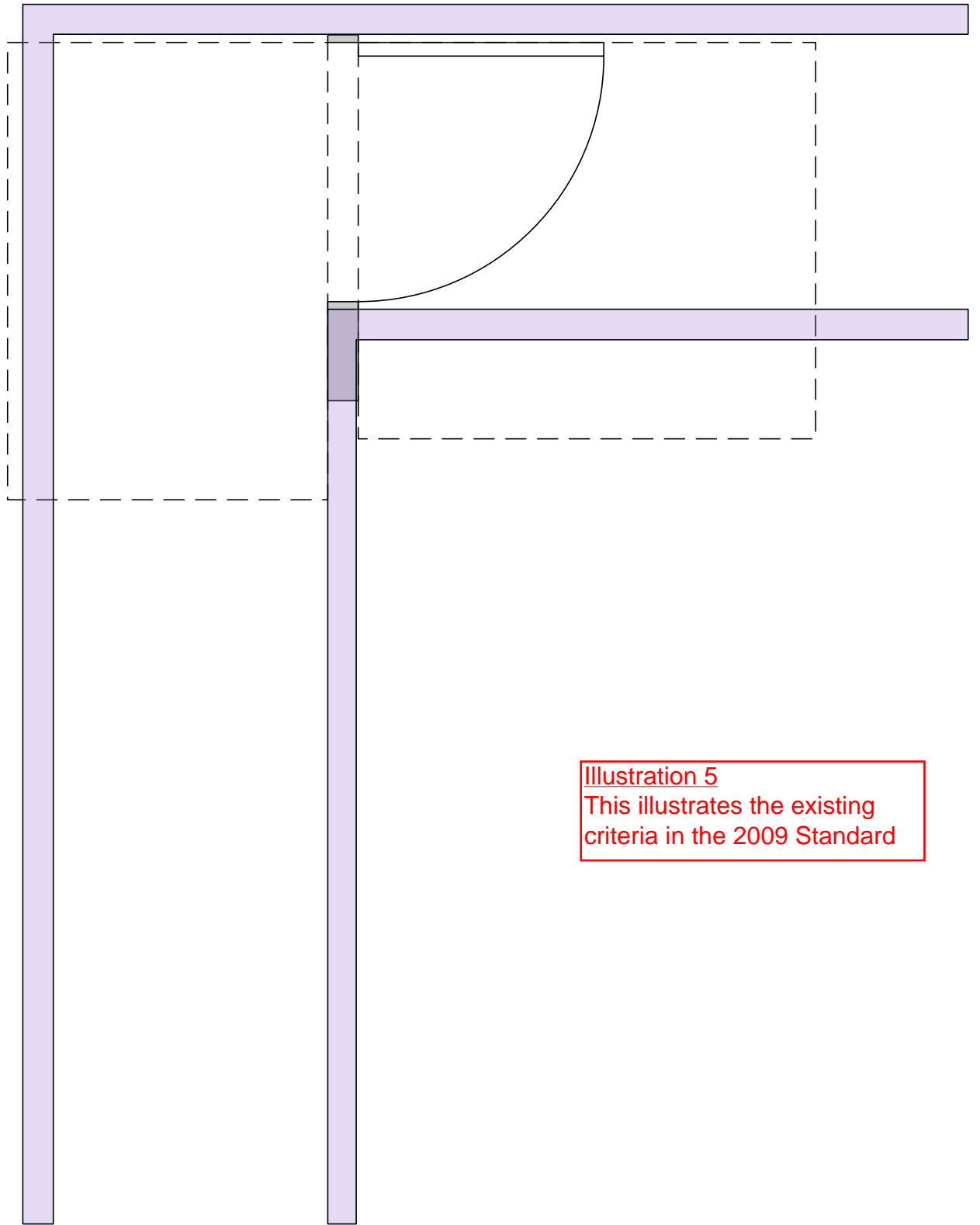


90 Option 3

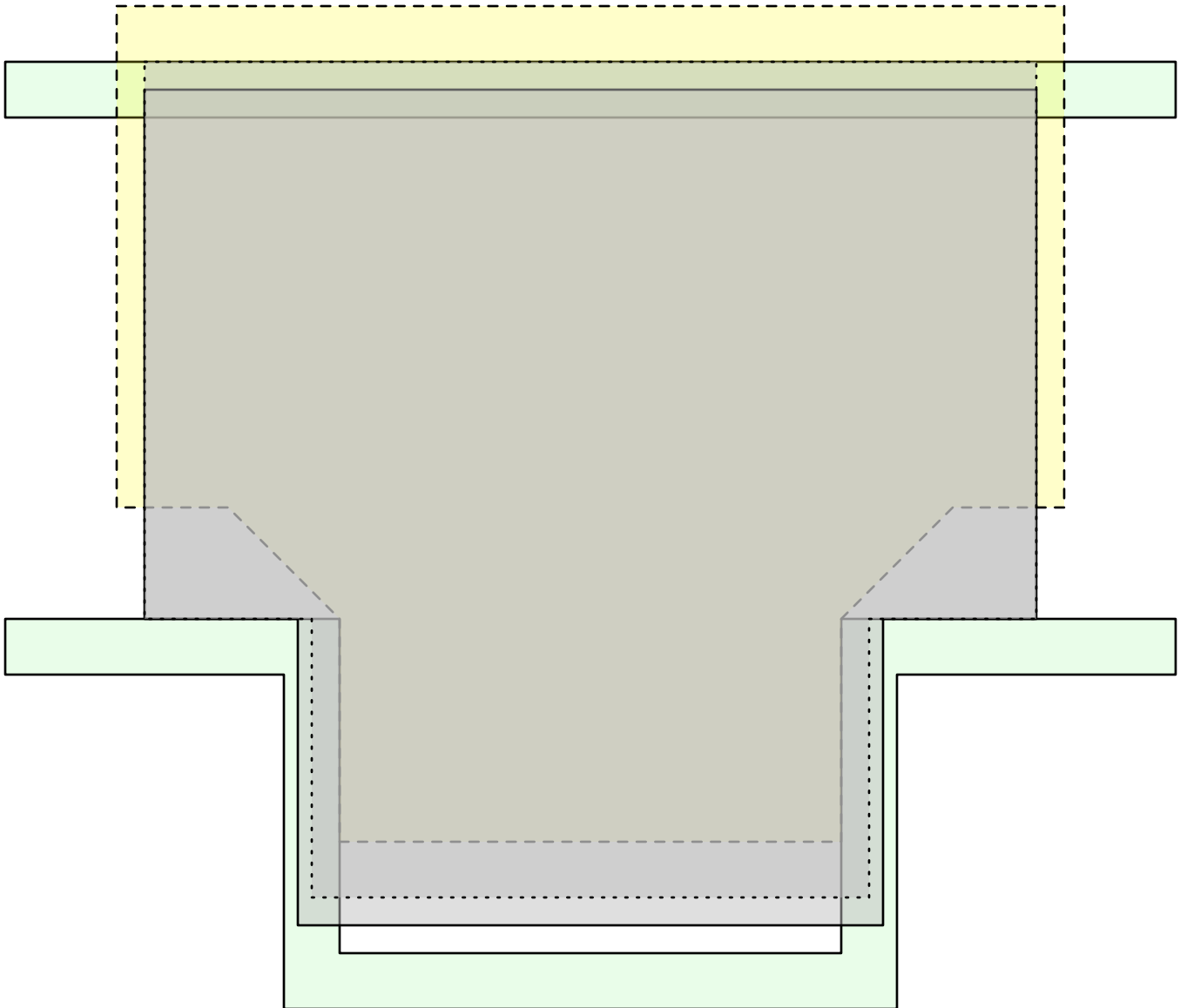
**Illustration 3**  
This illustrates the conflict  
between Items **2a** and **2b**  
of Editorial Task Group  
4/5/16 Inconsistency  
Questions Memo



**Illustration 4**  
This illustrates the conflict  
between Items **2a** and **2b**  
of Editorial Task Group  
4/5/16 Inconsistency  
Questions Memo



**Illustration 5**  
This illustrates the existing  
criteria in the 2009 Standard



*Alcove and T-turns*

Illustration 6  
This illustrates the conflict  
between Items **2a** and **2c**  
of Editorial Task Group  
4/5/16 Inconsistency  
Questions Memo

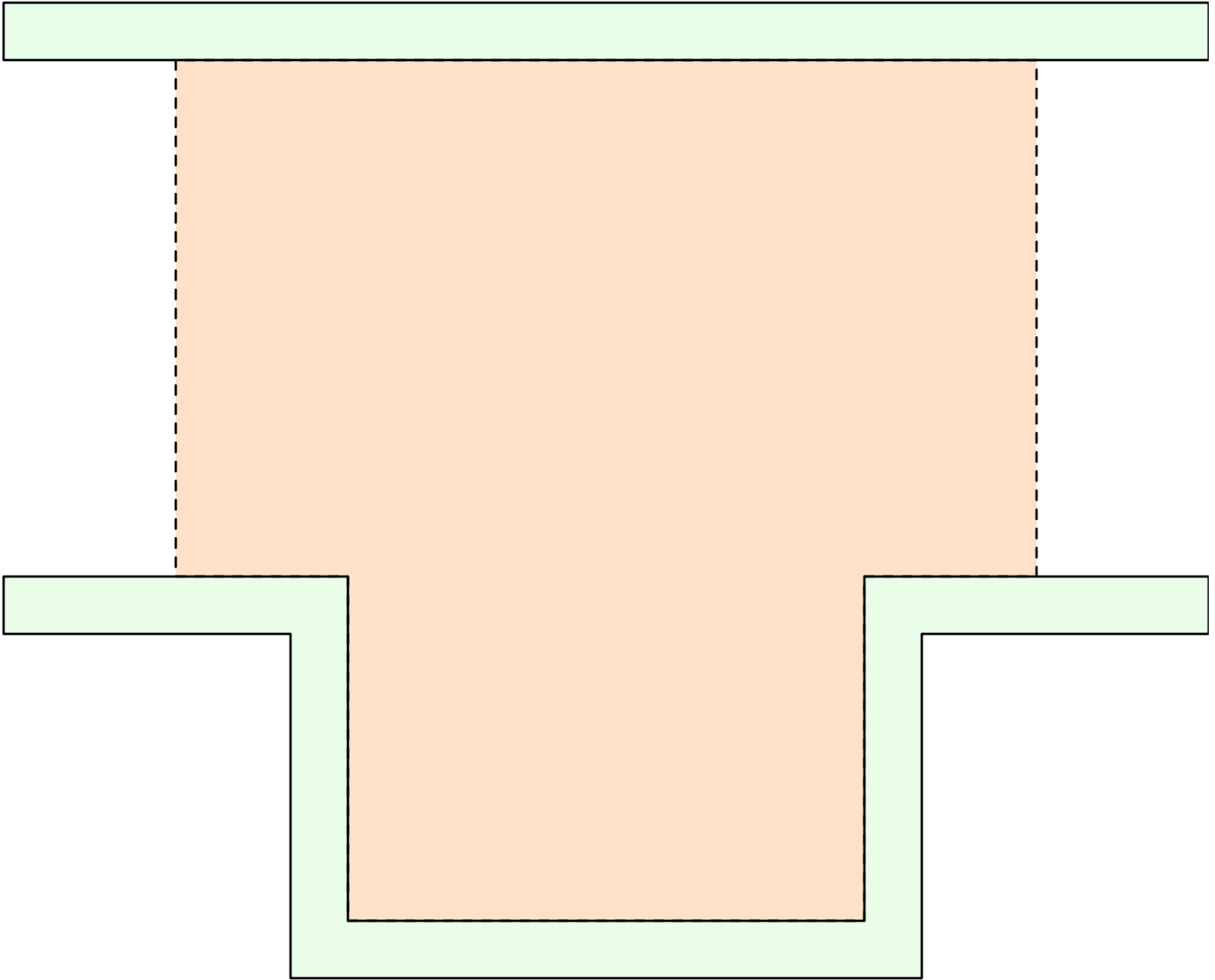
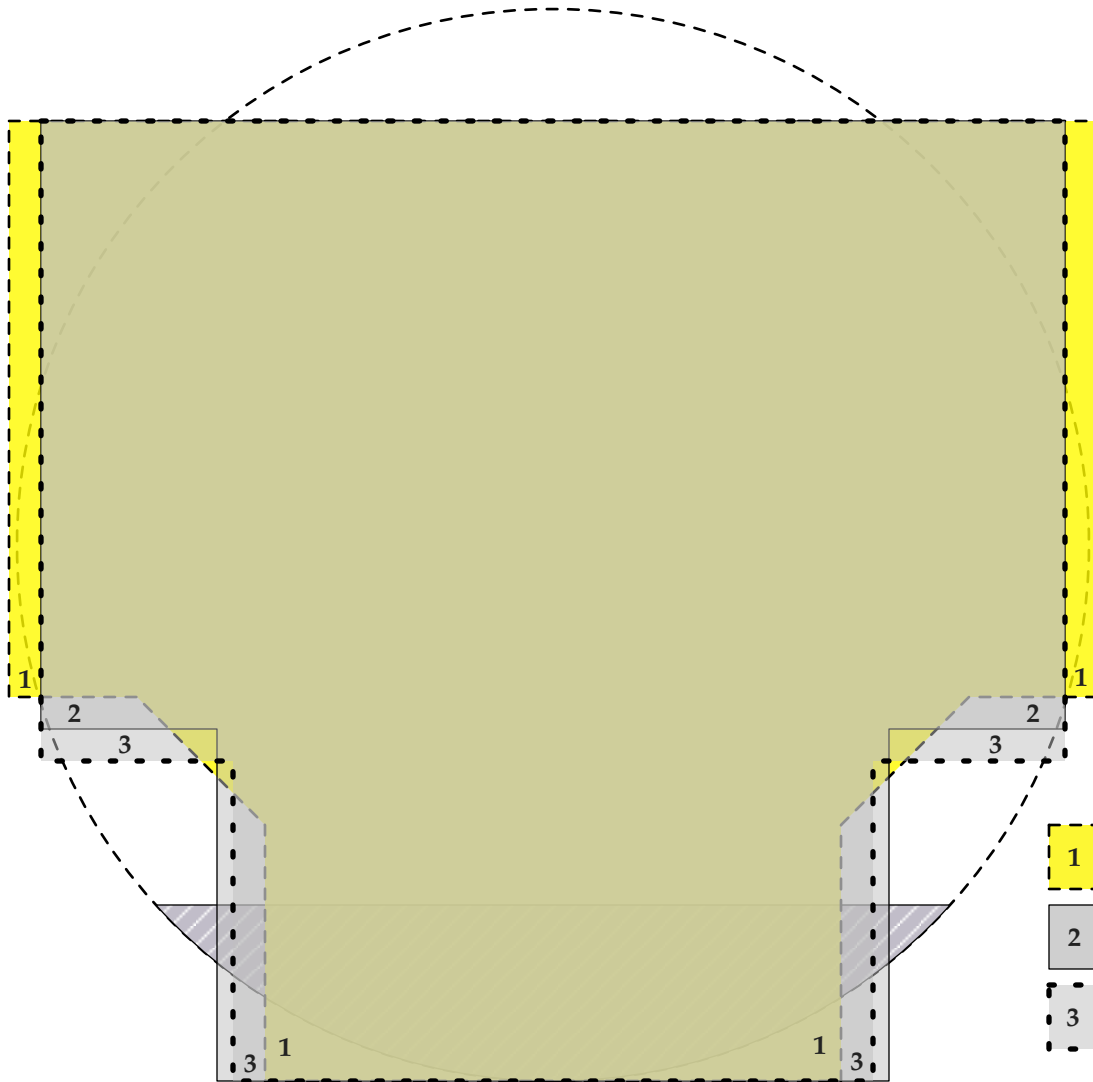


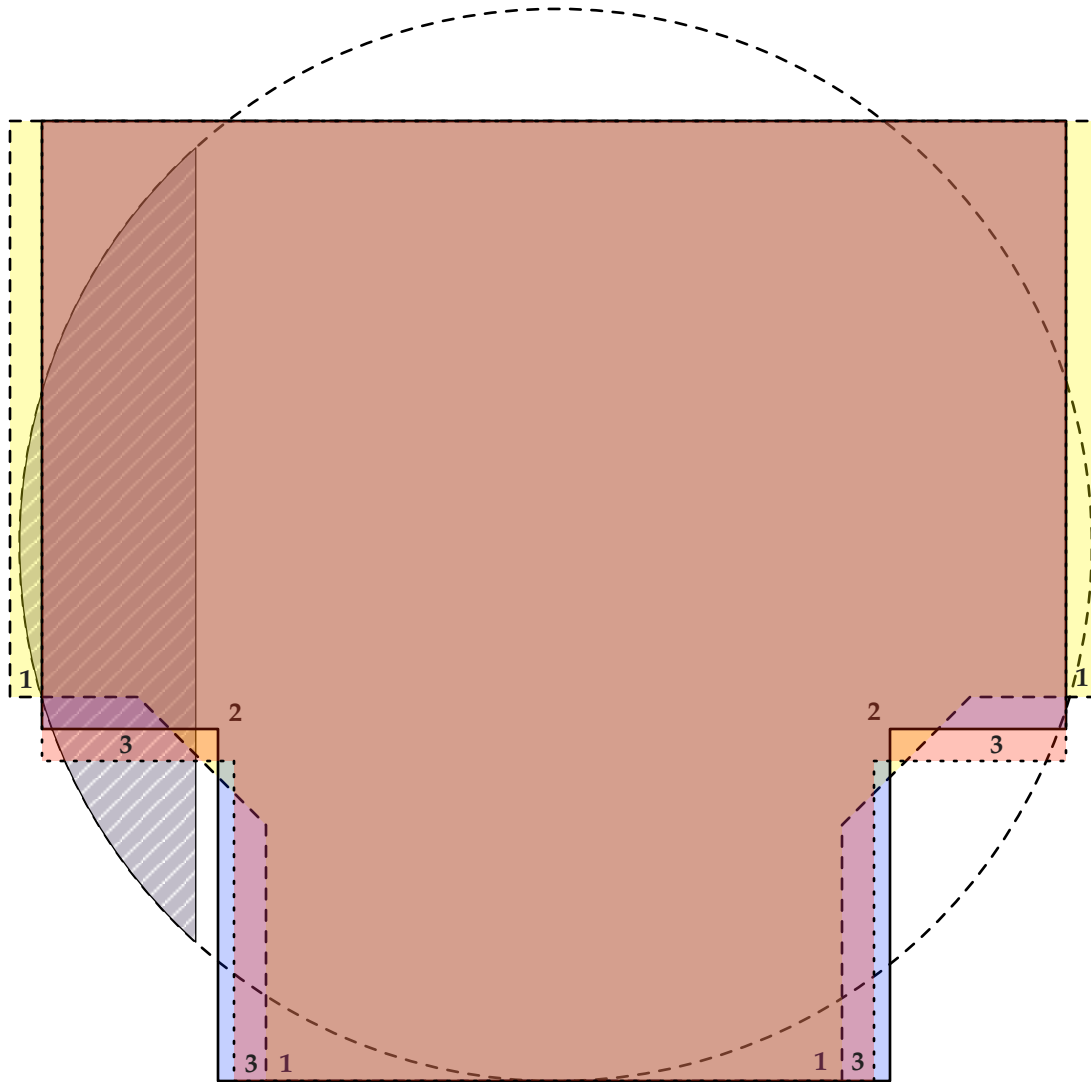
Illustration 7  
This illustrates the existing  
criteria in the 2009 Standard





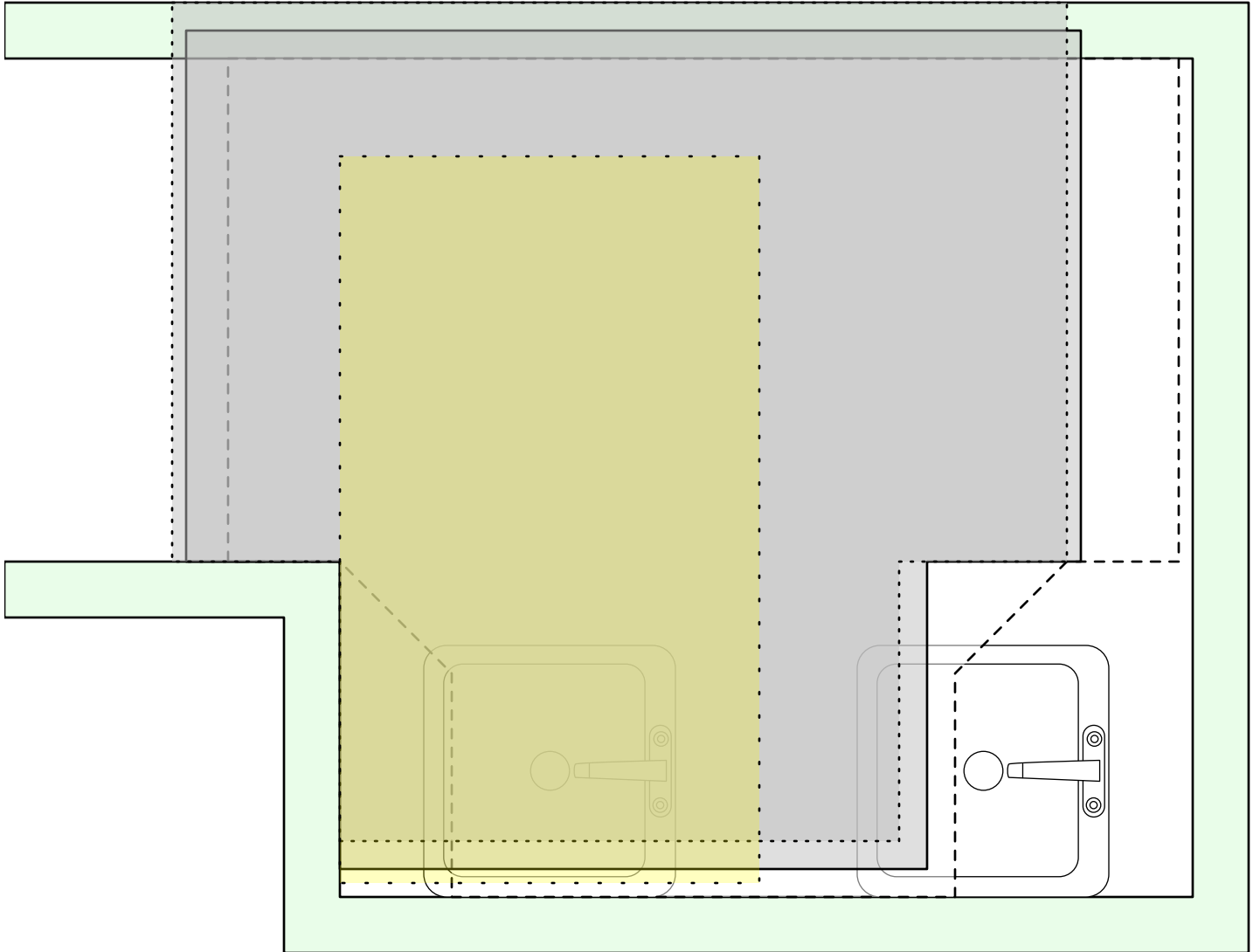
Base overlap of turns

[Illustration 8](#)  
[This illustrates the conflict](#)  
[in Item 2a of the Editorial](#)  
[Task Group 4/5/16](#)  
[Inconsistency Questions](#)  
[Memo](#)



Arm overlap of  
turning spaces

Illustration 9  
This illustrates the conflict  
between Items 2a and 3 of  
Editorial Task Group 4/5/16  
Inconsistency Questions  
Memo



Double drinking fountain and T-turn

Illustration 10  
This illustrates the conflict  
between Items **2a, 2c and  
3** of the Editorial Task  
Group 4/5/16 Inconsistency  
Questions Memo